



# ***ONLY LED DISPLAY***

**CORPORATE  
BROCHURE**

# COMPANY PROFILE

Established in 2006, ONLY LED DISPLAY is headquartered in Bao'an, Shenzhen, a renowned hub for science and technology in China. The company specializes in the research, development, production, and export of premium-quality outdoor and indoor LED displays, along with related peripheral products.

Our state-of-the-art production facility spans over 8,000 square meters and is equipped with advanced automated production lines and cutting-edge manufacturing technology. Operating under a modern enterprise management framework, we maintain a programmatic and standardized quality assurance system, ensuring superior craftsmanship and exceptional product performance.

At ONLY LED DISPLAY, we are committed to delivering innovative, energy-efficient, and high-performance solutions under our guiding principles of “Smarter, Brighter, Greener.” We are actively seeking professional distribution partners to expand our global footprint and share our vision for excellence in LED display technology.

18<sup>+</sup>

Since our establishment, the company has developed for 18 years.

80<sup>+</sup>

We have obtained over 80 patents for LED display screens both domestically and internationally.

100<sup>+</sup>

Our products have been successfully exported to over 100 countries and regions worldwide.

8000<sup>+</sup>

Our production facility covers an area of more than 8,000 square meters.



# COMPANY PROFILE



# 2006-2025

## Welcome to ONLY LED

Where innovation meets brilliance. Founded in 2006 in Shenzhen's Bao'an district, we lead in LED display technology, specializing in outdoor and indoor displays and related products. Our 8,000-square-meter facility features automated production lines and advanced equipment, adhering to a modern management model and rigorous quality control. Known for exceptional quality and craftsmanship, we deliver innovative solutions that exceed expectations. With a global reach, we've exported to over 100 countries, focusing on independent R&D and pushing industry boundaries. From plastic LED cabinets to fine-pitch screens, our products meet evolving customer needs. We've achieved milestones like projects at Beijing Capital Airport and installations in Times Square and London, earning over 80 patents. We offer a wide range of products and comprehensive services, committed to excellence and becoming the most trusted LED display provider. At ONLY LED, we aim to create a brighter future through innovation, quality, and customer satisfaction. Join us on this journey to a smarter, brighter, and greener world.

# Smart Factory Intelligent Manufacturing



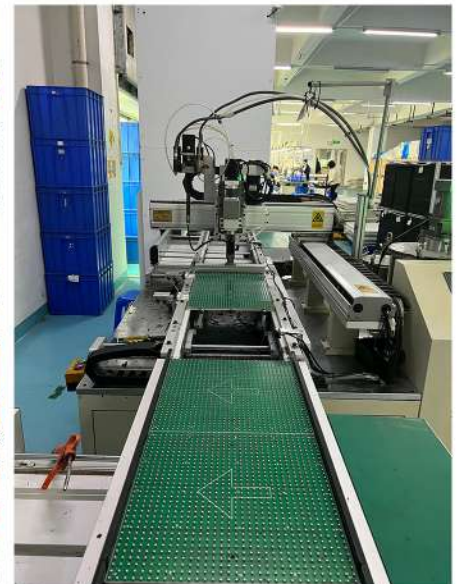
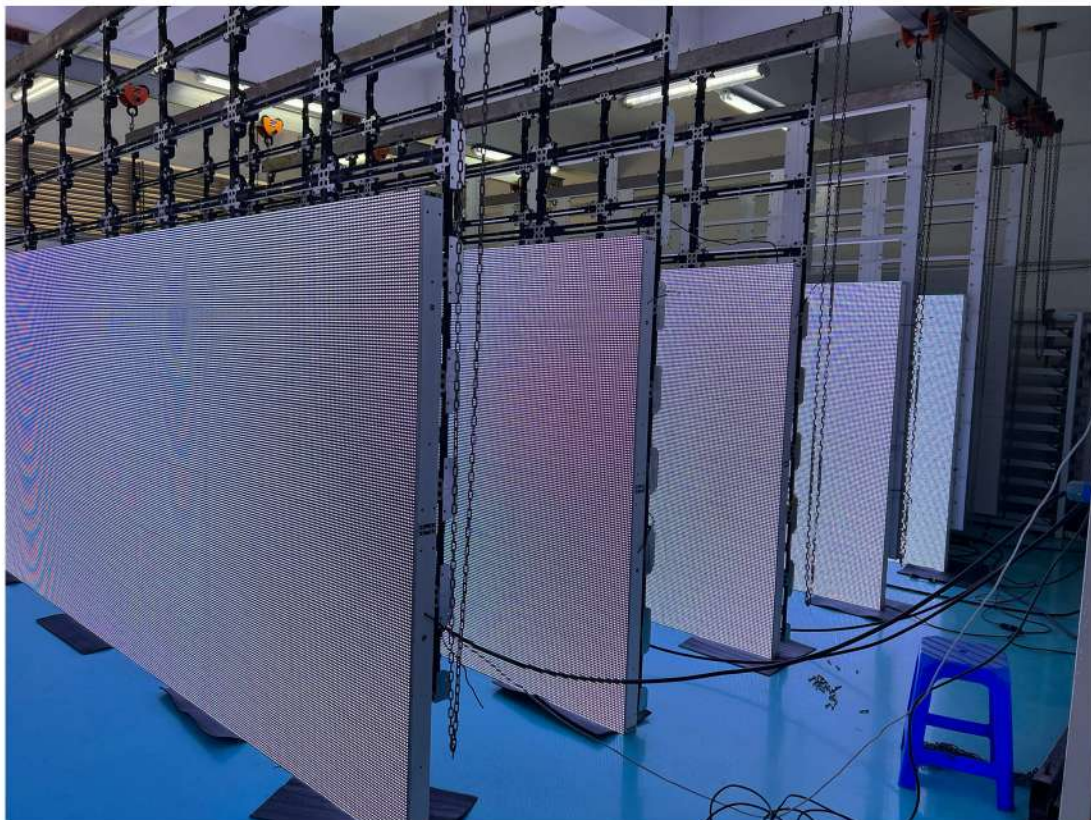
 Intelligent Production Workshop





## Precision Meets Speed

"Our workshop is where precision meets speed. Every stage is meticulously crafted for peak production efficiency, with intelligent systems overseeing every step for zero errors and maximum output."





## Warehouse

"Spacious storage areas combined with scientific layout maximize space utilization and improve access efficiency."

"We promise that every step from the warehouse to the customer is precise and efficient, ensuring the timely delivery of your orders."





## Our team

"Behind every LED screen lies our relentless pursuit of quality."

"A professional technical team and skilled operators are the solid guarantee of our product quality."



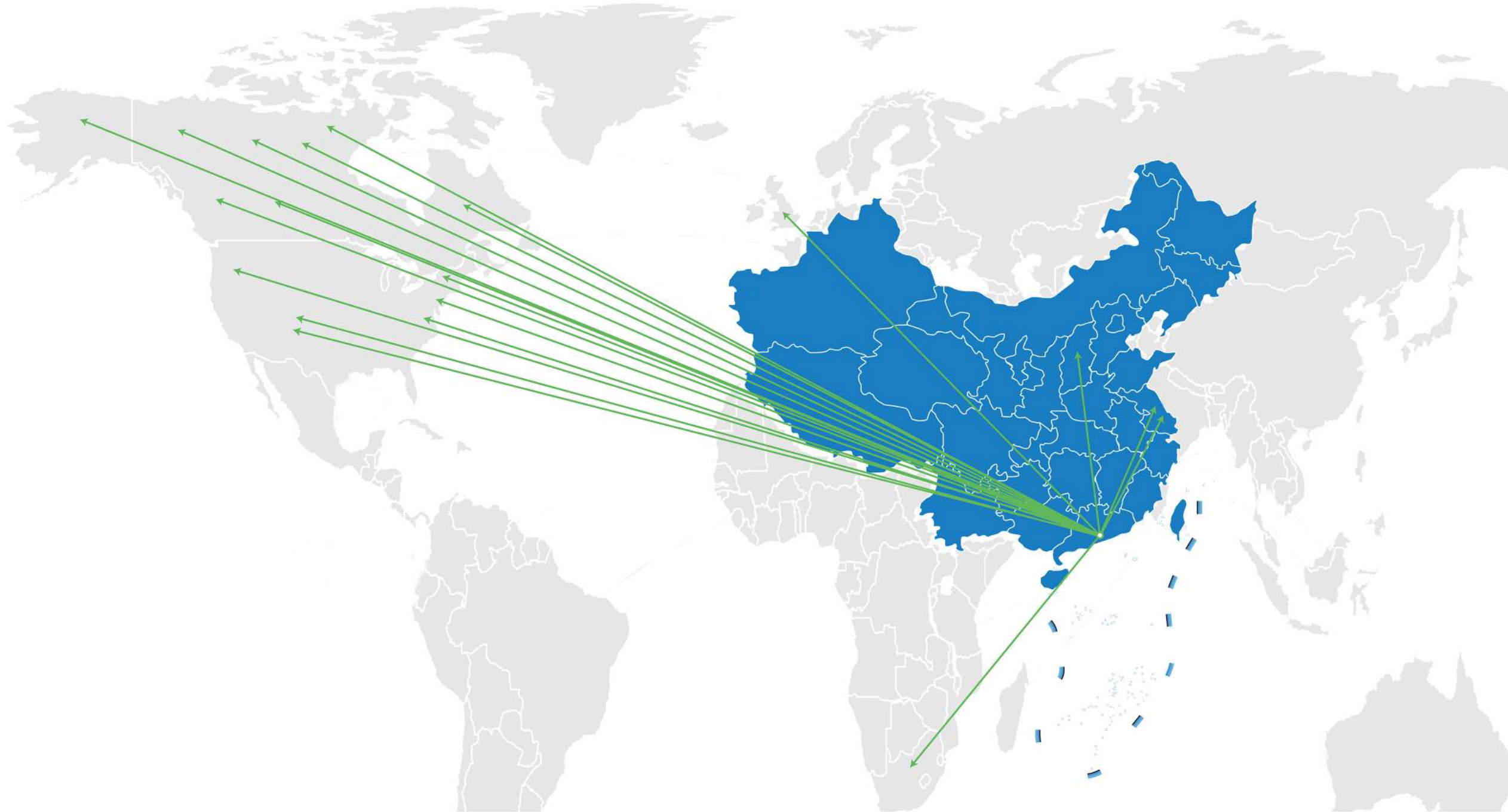
# Strong market service network covering the world

While our roots are in Shenzhen, our reach extends far beyond. Since our inception, we have exported LED displays to more than 100 countries and regions worldwide. We have always prioritized independent research and development, constantly pushing the boundaries of what is possible in LED display technology.

Professional engineering design solutions



Efficient response, professional service



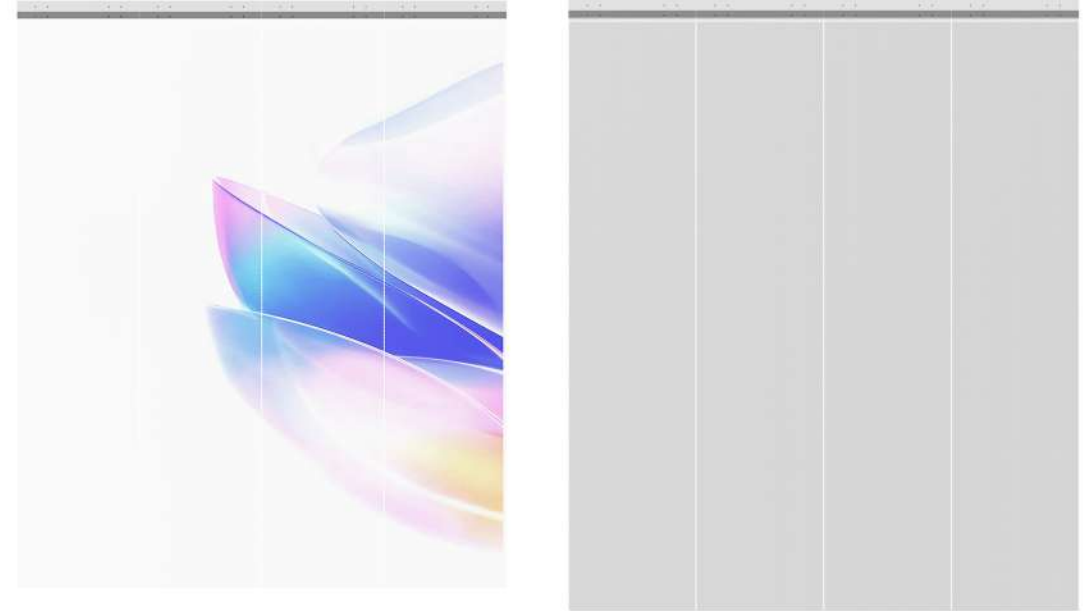


# Only Led Product Matrix(Indoor)

PRIME COB Series 320\*1280mm and 337.5\*1200mm



Transparent LED mesh Screens and Film screen



ALL-IN-ONE LED Screen 108° 136° 163°



600\*337.5mm COB LED panel



# Only Led Product Matrix(Outdoor)

U-PRO-S Series 1'×2' LED panel



XTE-Eilte Series  
960×960mm LED panel



Brain Box



U-PRO-L Series 2'×4' 3'×4' LED panel



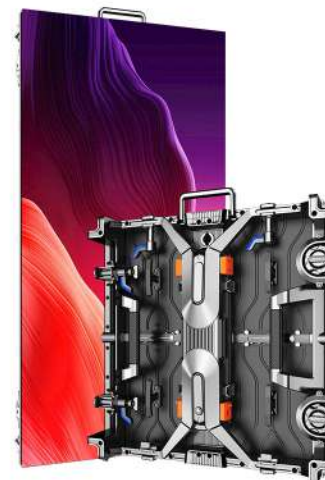
ROCK FLOOR SCREEN



XT-PRO-L Series 1000\*1000mm LED panel



LS Rental LED Screen Series



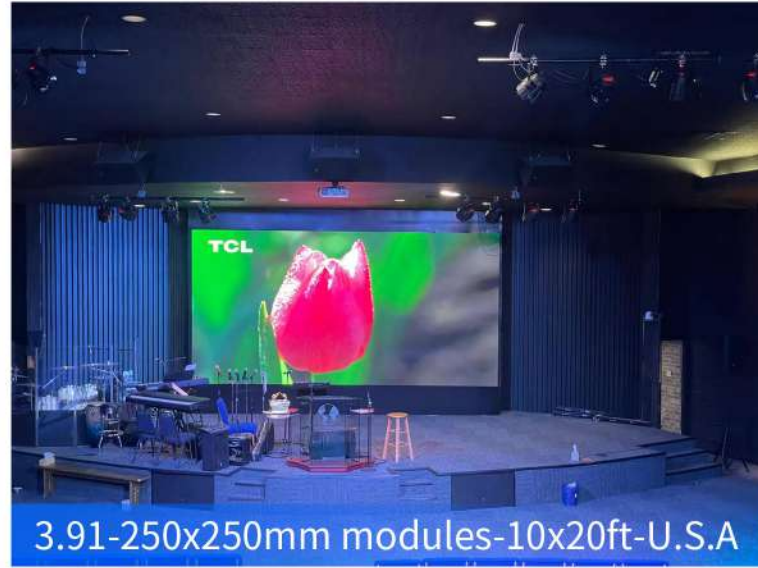
Digital signage



# Only Led Case (Indoor)



Shanghai P4



3.91-250x250mm modules-10x20ft-U.S.A



AT U-PRO-S-7X8 cabinet



P2.5-0.675x1.8m-2.2x5.9ft-U.K customer office



USA DJ booth LED screen-curved P2.5



USA-H P1.875 -4.2mx1.68m-

# Only Led Case (outdoor billboard)



New York



London commercial M series P7.6 SMD



New York



New York



UK PH5.6 4.32 X 11.52M



UK P7.62 8pcs of 3.048x12.19m



USA



USA



USA



USA



CANADA XT PH10.4 DIP 5X9M



USA



UK XT-PRO-PH3.91 L8



UK U-PRO-S 3.91



USA U series

# Only Led Case (outdoor Small size signs)



School signs



School signs



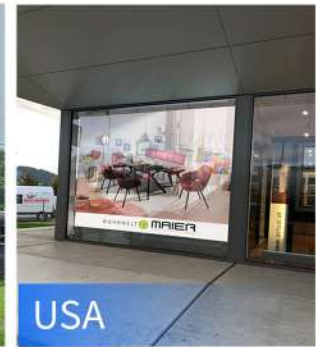
P3-church sign-9X16FT-USA



New Zealand XTP P7.81



2X8FT double face



USA



church signs



School signs



USA-U-PRO-3.81-CUL4-x8ft



School signs



USA



School signs



New Zealand XTP P7.81 5x0.5m



USA Faith Cathedral - Day



USA 2X8 FT DOUBLE SIDED SIGN

# Only Led Case (outdoor Small size signs)



Belgium - 3x624ft U-PH9.5-FOSC



3x8 df p9.5dip



3x6df 6.35



S-P5.6 milan italy



BT



9.52mm-U.S.A



USA-U-pro-S



USA U-PH9.5-FOSB 10X30FT



BT



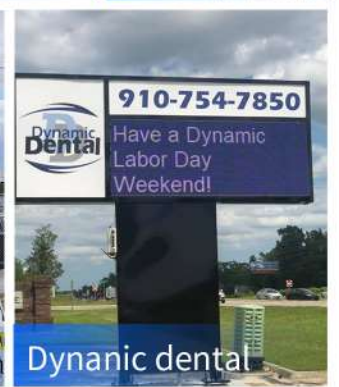
USA-U-PRO-S P9.52



4X10FT LED SIGN p6.35 ARKANSAS USA



USA 3x6ft DF



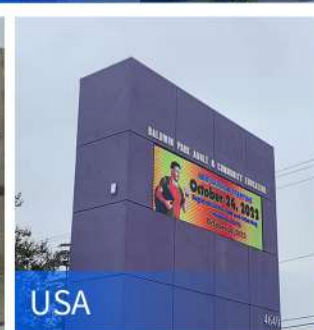
Dynamic dental



Belarus 1.8x10.08m-S-PH4.5-FOC



Austria 2X8FT-U-PH3.8-FOSC



USA



2X4FT 7.62mm



USA U-pro-L4 612ft



USA-U-PRO-S 9.5



USA-UP-PH9.52



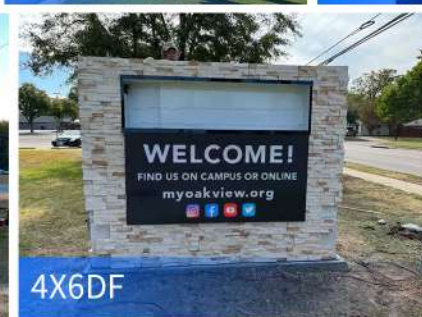
Sweden-u-ph3.8-fosc-3x6ft



USA M PH9 4X8ft SMD



USA 3X6FT DF



4X6DF



10H 7W-PH4.5



AT PH6.35 U-PRO-S



Thank you for exploring ONLY LED DISPLAY.

Together, we can create smarter, brighter, and greener solutions for a sustainable future.

Contact us today to discover how we can bring your vision to light.

Email: [info@onlyled.com](mailto:info@onlyled.com) Website: [www.onlyled.com](http://www.onlyled.com)

